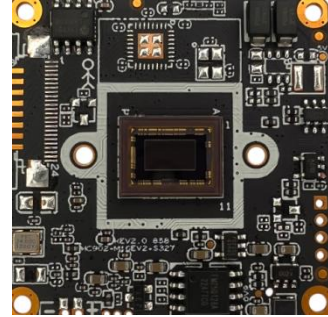


IM20S07(OEM) 2.0MP Low-illumination HD Network Camera Module

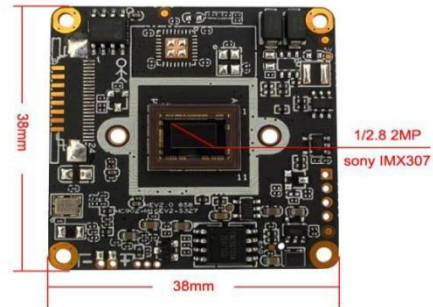
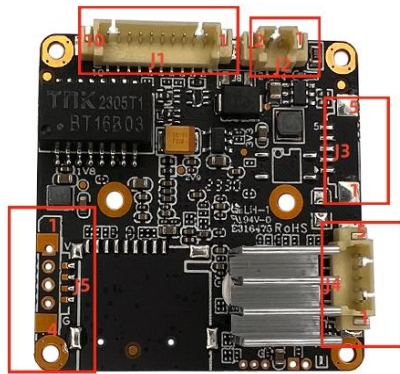


Key Features:

- 1/2.8" 2MP CMOS Sony IMX307 Sensor
- Maximum resolution up to 1920x1080@30fps
- True Day/Night, 2D/3D-DNR, Digital WDR, HLC, BLC
- Support Motion Detection
- Support the P2P on Android, IOS
- Support two way audio
- Support ONVIF2.4
- Support TCP/IP/HTTP/NTP/DHCP/SMTP/RTSP

Technical Specifications:

Image sensor	
Sensor	1/2.8" 2.0 MP CMOS Sony IMX307
Maximum Resolution	1920x1080@30fps
Minimum Illumination	Color: 0.01Lux B/W: 0.001Lux
Camera	
AGC	Auto/Manual
S/N Ratio	≥45dB (AGC OFF)
Shutter Speed	1/2 - 1/20,000s, Slow shutter support
Wide Dynamic Range	Digital WDR
Exposure Mode	Auto/ Manual/shutter mode
White Balance	Auto/ Manual /ATW/ Indoor/Outdoor/ lamp
Day & Night	External control (IR Cut Filter)
Image resolution	
Main stream	1920 × 1080/ 1280x960/ 1280x720@30fps
Sub stream	640×480/480x360/352×288/176×144@30fps
General Protocol	
Network protocol	TCP/IP/HTTP/NTP/DHCP/SMTP/RTSP
Onvif protocol	Standard ONVIF
Network interface	
Wired	1ch 10/100BaseT Ethernet, RJ45 interface
Other	
Power supply	12VDC
Size	38x38mm
Operation temperature	-10°C~50°C
Working humidity	≤90%RH(non-condensing)



Interface	Pin	Pin Name	Functional Parameter
J1	1	12VDC	DC power input, voltage range 5V-13.8V
	2	Gnd	Signal ground
	3	ETH_LED	Network indicator light interface
	4	IR	Soft photosensitive infrared
	5	Eth_TX-	Adaptive network interface, physically receiving/transmitting signals (differential -)
	6	Eth_TX+	Adaptive network interface, physically receiving/transmitting signals (difference +)
	7	Eth_RX-	Adaptive network interface, physically receiving/transmitting signals (differential-)
	8	Eth_RX+	Adaptive network interface, physically receiving/transmitting signals (difference +)
	9	WL	Soft photosensitive white light
	10	CDS_IN	Hard light sensitive infrared
J2	1	IR-CUT +	IRCUT signal +
	2	IR-CUT -	IRCUT signal-
J3	1	Alarm_in1	Alarm input 1
	2	Alarm_in2	Alarm input 2
	3	GND	Signal ground
	4	Alarm_out1	Alarm relay output 1
	5	Alarm_out2	Alarm relay output 2
J4	1	Audio_In	Audio linear input interface,
	2	Gnd	Signal ground
	3	Audio_Out	Audio linear output interface
	4	SYS_RST	Manual Reset
	5	NC	/
J5	1	3.3V	3.3V power supply
	2	USB_DM	data D-
	3	USB_DP	data D+
	4	GND	Signal ground