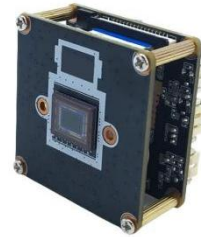


## **MC800G** **4K Real-time Illumination AI HD Network Camera Module**



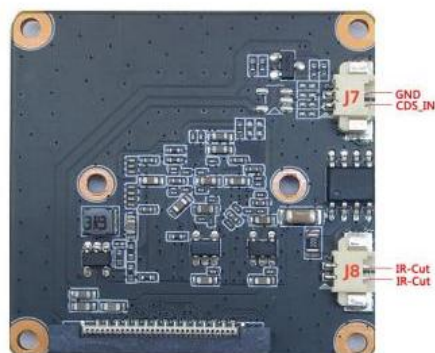
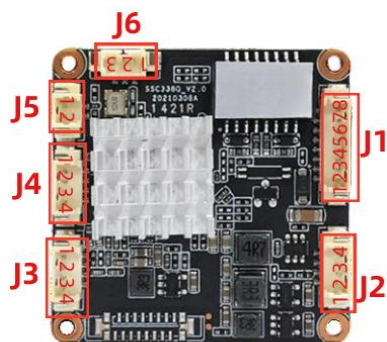
The MC800G 4K Real-time lighting AI high-definition network camera module adopts upgraded H.265 encoding technology, and the environmentally friendly series brings efficient video compression capabilities. It can save bandwidth and storage space. Embedded web server, supporting internet exploration monitoring, configuration, and upgrade; Standard SDK (Linux, Windows), easy to integrate with other digital systems.

### **Key Features:**

- 1/2.8"8MP IMX415 Sensor
- Maximum resolution up to 3840x2160@20fps
- True Day/Night, 3D DNR, Digital WDR
- Support Motion Detection
- Support AI human detection ,vehicle detection
- Support the P2P on Android, IOS
- Support two way audio
- Support ONVIF2.4
- Support TCP/IP/HTTP/NTP/DHCP/SMTP/RTSP

## Technical specifications:

Image sensor	
Sensor	1/2.8" 8MP IMX415 CMOS
Maximum resolution	3840x2160@20fps
Minimum illumination	Color: 0.05Lux B/W: 0.01Lux
Camera	
AGC	Auto/Manual
S/N ratio	≥50dB (AGC OFF)
Shutter speed	1/2 - 1/20 ,000s, Slow shutter support
Wide dynamic range	Digital WDR≥73.7dB
Exposure mode	Auto/ Manual/shutter mode
White balance	Auto/ Manual /ATW/ Indoor/Outdoor/ lamp
Day & Night	External control (IR Cut Filter)
Image resolution	
Main stream	3840 ×2160@20fps 3072x2048/2592x1944@30fps
Sub stream	640x480/480x360/352x288/176x144@30fps
Protocol	
Network protocol	HTTP/RTSP/DHCP/NTP/P2P/ONVIF
Network interface	
Wired	1ch 10/100BaseT Ethernet, RJ45 interface
Other	
Power supply	12VDC
Size	38x38mm
Operation temperature	-30°C~60°C
Working humidity	≤90% RH (non-condensing)



Interface	Pin	Pin name	Functional parameter
J1	1	DC12V+	DC 12V input
	2	GND	Gnd
	3	RJ45_6	Network receiving differential signal RJ6
	4	RJ45_3	Network receiving differential signal RJ3
	5	RJ45_2	Network sends differential signal RJ2
	6	RJ45_1	Network sends differential signal RJ1
	7	LED_+	Network connection indicator light positive
	8	LED_+	Network status indicator light positive
J2	1	GND	Gnd
	2	AF_TX	AF automatic focusing interface
	3	AF_RX	NC
	4	SPK_EN	Power amplifier IO
J3	1	GND	Gnd
	2	AUDIO_OUT	External speaker
	3	AUDIO_IN	Active/Passive Pickups
	4	GND	Gnd
J4	1	USB_3.3V	
	2	USB_D+	
		USB_D-	
		GND	
J5	1	RESET	Reset
	2	GND	Gnd
J6		PWM0	Soft photosensitive warm light
		PWM1	Soft photosensitive infrared
		GND	Gnd
J7	1	GDS_IN	Infrared light control signal input
	2	GND	Gnd
J8	1	IR-CUT	output
	2	IR-CUT	output