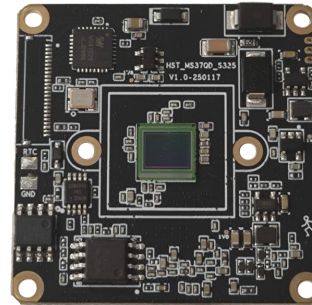


## IM50Q01 SSC377QE+335



The IM50Q01 is a cost-effective 5MP surveillance network camera module designed for both indoor and outdoor use. It features a 1/2.8" Sony IMX335 STARVIS sensor and is powered by the Sigmastar SSC377QE SoC, equipped with 2Gb of RAM. In terms of extended I/O capabilities, it supports dual light source illumination, as well as microphone and speaker connections, enabling two-way audio and additional interfaces.

For secondary development, the IM50Q01 includes two set UART interfaces and provides SDKs for Windows, Linux, and Android. It also supports the ONVIF standard protocol, along with OpenIPC and FPV firmware. This makes it highly convenient for secondary development and allows for quick integration into your projects.

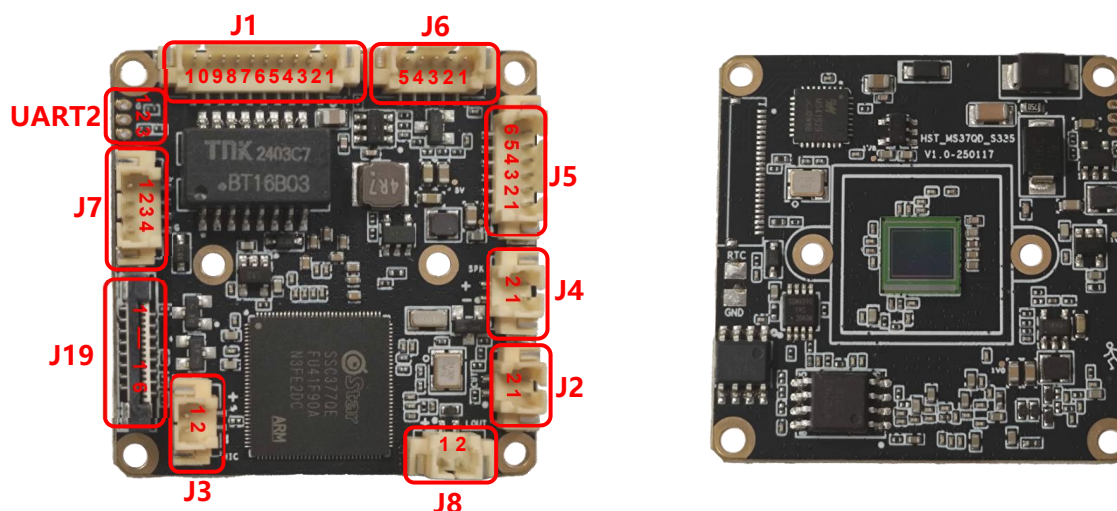
### Key Features:

- 1/2.8" 5MP CMOS Sony IMX335
- Powered by SigMastar SSC377QE SoC embedded 2Gb DDR3/L
- Maximum resolution up to 2592x1944@30fps
- True Day/Night, 3D DNR, Digital WDR
- Support humanoid detection, motion detection
- Support the P2P on Android, IOS default without ....
- Support two way audio, Built-in audio amplifier function
- Support ONVIF protocol
- Support TCP/IP/HTTP/NTP/DHCP/SMTP/RTSP
- Open SDK(Linux,Windows), CGI,easily to be integrated with other digital systems
- Support OPENIPC development

## Technical Specifications:

<b>Image Sensor</b>	
Sensor	1/2.8" 5MP Sony IMX335 CMOS
Maximum Resolution	2592x1944@30fps
Minimum Illumination	0.02lux @F1.0(Color) / 0.01 lux@F1.0 (B/W)
<b>Camera</b>	
AGC	Auto/Manual
S/N Ratio	≥50dB (AGC OFF)
Shutter Speed	1/2 - 1/20 ,000s,Slow shutter support
Wide Dynamic Range	Digital WDR≥73.7dB
Exposure Mode	Auto/ Manual/shutter mode
AWB	Yes
Day & Night	External control (IR Cut Filter)
Light Control	Support IR/White/dual light, three mode independent control
<b>Compression</b>	
Video Compression	H.265/H.264 Main Profile /M-JPEG
Audio Compression	G711U, G711A,PCM
<b>Image Resolution</b>	
Main Stream	2592x1944/1920x1080@30fps
Sub Stream	640x480/640x360@30fps
<b>General Protocol</b>	
Network Protocol	TCP/IP/HTTP/NTP/DHCP/SMTP/RTSP/P2P
ONVIF protocol	Support
Compatibility	Support HIK/XM protocol default without ....
<b>P2P</b>	
Support APP	Support for APP (Android, IOS) default without ....
<b>Function</b>	
Web Configuration	Yes
OSD	Yes
Motion Detection	Yes
Humanoid Detection	Yes
Reset	Support cable reset button(optional)
Amplifier	Built-in amplifier
<b>Interface</b>	
Wired	1ch 10/100 BaseT Ethernet,RJ45 interface
Audio	Microphone input/output
Alarm	2 ports input, 2 ports output
UART	Support
USB	Support
TF Card	Optional and max. 512G (reserved extended SD slot)
<b>Other</b>	
Power Supply	12VDC
Size/Weight	38x38mm /10g
Operation Temperature	-30°C~60°C
Working Humidity	≤90%RH(non-condensing)

## Interface Pin Definition:



Interface	pin	Pin name	Functional parameter
<b>J1</b>	1	12VDC	DC power input, 12V
	2	GND	GND
	3	ACT_LED	Network indicator light interface
	4	SYS_RST	Restore factory settings LOW valid
	5	PWR_TD+	PWR_TD+
	6	PWR_TD-	PWR_TD-
	7	PWR_RD+	PWR_RD+
	8	PWR_RD-	PWR_RD-
	9	UART1_TXD	Serial communication, sending TX
	10	UART1_RXD	UART1, receive RX
<b>J2</b>	1	IR-CUT-	IRCUT signal -
	2	IR-CUT+	IRCUT signal+
<b>J3</b>	1	MIC+	MIC+
	2	MIC-	MIC-
<b>J4</b>	1	SPK-	SPK-
	2	SPK+	SPK+
<b>J5</b>	1	GPIO2	Reserve GPIO
	2	IO_IR	Soft photosensitive infrared
	3	IO_WL	Soft photosensitive white light
	4	CDS_IN	Hard light sensitive infrared
	5	GND	GND
	6	12V	12V DC OUT
<b>J6</b>	1	Alarm_in1	Alarm input 1
	2	Alarm_in2	Alarm input 2
	3	GND	GND
	4	Alarm_out1	Alarm relay output 1
	5	Alarm_out2	Alarm relay output 2
<b>J7</b>	1	3.3V	3.3V power supply
	2	USB_DM	data D-
	3	USB_DP	data D+
	4	GND	GND
<b>J8</b>	1	LINE_OUT	LINE_OUT
	2	GND	GND
<b>J19</b>	1-16	Expand	Expand TF card storage, RS485, Reset function
<b>UART2</b>	1	GND	GND
	2	UART2_RXD	Serial communication, UART2, receive RX
	3	UART2_TXD	Serial communication, UART2, sending TX