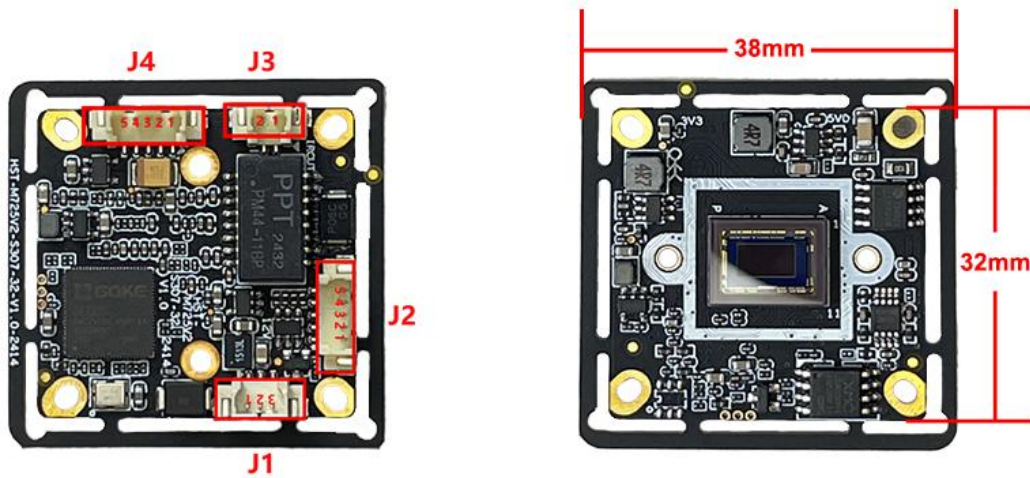


IM20A02B
2.0MP HD IPC Module**Key Features:**

- 1/2.8" 2MP CMOS Sony IMX307 Sensor
- Maximum resolution up to 1920×1080@30fps
- True Day/Night, 3D DNR, Digital WDR
- Support Motion Detection
- Support the P2P on Android, IOS
- Support Two way audio
- Support ONVIF
- Support TCP/IP/HTTP/NTP/DHCP/SMTP/RTSP

Technical specifications:

Image sensor	
Sensor	1/2.8"2MP CMOS Sony IMX307
Maximum resolution	1920x1080@30fps
Minimum illumination	Color: 0.1Lux B/W: 0.01Lux
Camera	
AGC	Auto/Manual
S/N ratio	≥45dB (AGC OFF)
Shutter speed	1/2 - 1/20 ,000s, Slow shutter support
Wide dynamic range	Digital WDR
Exposure mode	Auto/ Manual/shutter mode
White balance	Auto/ Manual /ATW/ Indoor/Outdoor/ lamp
Day & night	External control (IR Cut Filter)
Image resolution	
Main stream	1920×1080/1280×960/1280×720@30fps
Sub stream	640×480/480×360/352×288/176×144@30fps
General protocol	
Network Protocol	TCP/IP/HTTP/NTP/DHCP/SMTP/RTSP
ONVIF protocol	Standard ONVIF
Network interface	
Wired	1ch 10/100BaseT Ethernet, RJ45 interface
Other	
Power supply	12VDC
Size	32x32mm
Operation temperature	-30 ° C ~60 ° C
Working humidity	≤90%RH(non-condensing)



Interface	pin	Pin name	Functional parameter
J1	1	12VDC	12 power input
	2	Gnd	Signal ground
	3	LED_INPUT	Photosensitive input
J2	1	ACT_LED	Soft photosensitive infrared
	2	RX-	Adaptive network interface, physically receiving/transmitting signals (differential -)
	3	RX+	Adaptive network interface, physically receiving/transmitting signals (difference +)
	4	TX-	Adaptive network interface, physically receiving/transmitting signals (differential-)
	5	TX+	Adaptive network interface, physically receiving/transmitting signals (difference +)
J3	1	IR-CUT+	IR-CUT signal +
	2	IR-CUT-	IR-CUT signal -
J4	1	AC_IN	MIC input
	2	GND	MIC GND
	3	AC_OUT	AUDIO OUT
	4	GND	AUDIO GND
	5	SYS_RESET	Reset signal input